

# KCC Newsletter

## December, 2022

Kashiwa Cross-cultural Center, Palette Kashiwa  
1-7-1-301 Kashiwa,  
Kashiwa, Chiba, Japan 277-0005  
■TEL: 04-7157-0281 ■FAX: 04-7165-7321  
■E-MAIL: [kcc@kira-kira.jp](mailto:kcc@kira-kira.jp)  
■URL: <https://www.kcc.kira-kira.jp>



Vol.  
80

### Kashiwa de International Exchange Festa (11/20)



Howdy Mall with booths lined up

Due to the COVID-19 pandemic, the Festa was held as a hybrid at Palette Kashiwa and online in 2020, and only online in 2021. At last, it was held in-person at Howdy Mall, Kashiwa Station East Exit, for the first time in three years. Although the weather forecast predicted rain on the day and we were all worried, both the stage performances and the booth operation went smoothly.

On the stage with a red carpet, international performances such as a salsa band; Cuban music; Egyptian, Peruvian, and Balinese dances; and tap dance were held. Also, there were Japanese performances such as Tsugaru "shovel" shamisen, theatrical sword fighting, and aikido (martial art for self-defense). Many citizens stopped to watch the performances. In addition, a dancing group from Guam, Kashiwa's friendship city, joined the

festa and entertained the audience.

In the area where tents were lined up, several groups and their activities were introduced such as Kashiwa's sister and friendship cities, Japanese and foreign language classes, the activities of KIRA's various committees, and the free consultations for foreign residents. There were also interactive entertainments such as a quiz corner on countries of the world, and games for children. Goods from around the world sold at the event included products from Korea, China, and Bulgaria; sweets from the other countries; and coffee beans. On top of that,

the food and beverage booths by vendors satisfied the stomachs of the visitors, who were able to taste Korean, Taiwanese, Thai, Nepalese, Vietnamese, Turkish, and American cuisines. With careful infection control, we could hold the in-person event this year. The day made us keenly aware of the importance of having face-to-face interaction between people.



Tsugaru "shovel" shamisen



Peruvian dance



Torrance booth



Chengde booth



Balinese dance



Furoshiki wrapping experience



Sweets from around the world



## Exchange Programs with Sister & Friendship Cities of Kashiwa

### The footsteps of Exchange with Camden (11/6)

Last March, 'Camden Day' was held online to commemorate the 25th Anniversary of the Friendship City Agreement with the town of Camden, Australia. Ms. Monique Dunk was the lecturer at that time. Since she hosted a student delegate from Kashiwa, she has visited Kashiwa several times and has been one of the people who cares about Kashiwa very much. The COVID-19 pandemic made it difficult to conduct interactive programs including student exchanges, so the March event was held online. It sure was a wonderful occasion for the town of Camden and the city of Kashiwa, and the citizens of both cities interacted for the first time in a while. Though at the same time, the online event made us want to see each other in person even more. So, in November, our mutual wish to "see each other in person" came true. Ms. Monique Dunk actually came to Kashiwa to give a lecture. Until the day of the event, we had some concerns about the various procedures Ms. Dunk had to go through in order to visit Japan, in addition to the COVID-19 situation. However, at the event, the lecturer and the Kashiwa citizens interacted through quizzes and the Q&A time. Everyone had a great time together. We can only hope that the COVID-19 situation will improve and that the exchanges will resume as before.



### Kashiwanoha Interactive Walking Tour in Autumn (10/23)

On a sunny autumn day, a group of 10 people, including two international students from the University of Tokyo (from Spain and Turkey) and three Chinese residents living in Kashiwa, walked about 5 kilometers from Kashiwanoha Campus Station to Suwa Shrine.

We arrived at the historic shrine in a little over an hour, visiting Kashiwa's war ruins along the way. It was a hot day for October, but the fresh breeze felt comfortable among the trees in the "Osuwa-sama" shrine precinct. We felt its sacred atmosphere. The Japanese participants explained in English about komainu, torii gate, and how to visit the shrine to the international students who were visiting a Japanese shrine for the first time.

We enjoyed the interaction as we strolled around the spacious shrine grounds while guiding the visitors. There were also many families visiting the shrine for the Shichi-Go-San festival, and it was good to be able to introduce one of Japan's cultural traditions. We would like to continue to conduct local interactive activities.



With the statue of Minamoto no Yoriie, dedicating a horse to the shrine

## Announcement

### New Year's Decorations

We will make simple ornaments and chopstick bags to celebrate the New Year. After the workshop, let's enjoy socializing together!

Date & Time: Tuesday, December 20, 10:00 a.m. - 11:45 a.m.

Place: Palette Kashiwa Multipurpose Space A

Participation fee: 300 yen (including social event fee), and about 1,000 yen for materials (actual cost of flowers, etc.) No need to bring anything. Please wear a mask when participating.

Number of participants: 15 (first-come, first-served basis)

Application: Sign up at the KCC office by Wednesday, December 14, or send an email to <boshu-2@kira-kira.jp> with your name and phone number.



A pine ornament and a chopstick bag

### The 12th English Speech Contest – Entries Wanted!

Date & Time: Saturday, February 11, 2023, 2:00 p.m. - 4:30 p.m.

Place: Crystal Hall, Amuser Kashiwa

Eligibility: Junior high school students and above who live, work, or study in Kashiwa or its neighboring areas; whose native language is not English.

Participation fee: Free

Speech requirements: (1) In English. At least 3 minutes long, but not more than 5 minutes, (2) Theme/title: any

Number of applicants: About 10 people (first-come, first-served basis)

Application: Send an email to <gaikokugo@kira-kira.jp> from Friday, December 2.

Be sure to include your name, address, telephone number, email address and age.



### Free Legal Advice and Administrative Procedure Support for Foreign Residents

To foreign residents. Are you in need of help? Lawyers and administrative procedure specialists are available for consultation. You can ask for specialists' advice on issues such as family or partner violence, divorce, visa procedures, and problems at work. Reservation necessary.

Date & Time: Wednesday, December 28, 1:00 p.m. - 5:00 p.m. Place: Palette Kashiwa Room A

Reservation: the KCC office

<NOTE>Please include the event name, your name and phone number when applying by email. The events may be cancelled depending on the Covid-19 situation. Contact the office for more information. Please wear a mask when participating.



## Seeking New Forms of Exchange

Ms. Monique Dunk, Camden International Friendship Association

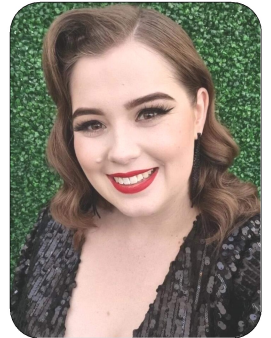
### <Please give us your profile.>

I have parents and a sister three years younger than me. I currently work for a travel agency. My hobbies are traveling, shopping, and watching movies. I enjoy shopping whenever I come to Japan.

I love Japanese stationery and cute sundries.

### <Relationship with Kashiwa>

It has been 25 years since the Friendship City Agreement was finalized with Camden, a friendship city of Kashiwa City. I served as a lecturer at the online event "Camden Day" held in March. It was a pleasure to be able to actually come to Kashiwa for this event held on November 6, and to participate as a lecturer again. My first encounter with KIRA was back in 2012 when I accepted Yukina, a student from Kashiwa, into my home. Since then I have been involved in the activities of CIFA (Camden International Friendship Association). In 2013 I came to Japan as an exchange student, in 2017 as a member of a youth group, and in 2018 with my family.



Ms. Monique Dunk

### <How have the students who came to Kashiwa in the past grown through their exchange program participation?>

It was a great experience because they were able to learn more about Japan through various cultural experiences.

### <Impression of participating in Camden Day held in March, and attending Camden Day this year>

It was very good to be able to connect with KIRA online, as it was difficult for both sides to interact with each other, including the exchange program, due to the Corona Disaster. Although it was through the screen, I was very happy to be able to see the faces of people I had missed and talk with them. I had to go through a lot of formalities before I could participate in this event, and I was anxious about the situation regarding Corona. However, I was very happy to finally arrive in Kashiwa and meet everyone at Palette Kashiwa. It was great to meet everyone in Kashiwa through the quizzes and Q&A at the event. It was also a very important time for me to communicate with the Camden Committee members.

### <Due to the COVID-19 pandemic, the situation that we have been unable to host exchange students between Kashiwa and Camden continues. How would you like to interact in the future?>

I really hope that the situation will calm down and the Exchange Program will actually resume. However, since the situation is still unpredictable, I think that we need to find a different way to interact with each other. I would like to find various ways to communicate, such as online lessons to learn origami, which is a wonderful and beautiful Japanese culture, or virtual tours where you can experience the nature of Camden realistically.

## Information from Other Organizations

### Online Study Meeting for KIRA Members "Volunteer a la carte #2" - Programs that citizens want to

Date and Time: Thursday, December 15, 8:00 p.m. - 9:00 p.m.

Leader: Mr. Takahiro Kageyama (Community Development Coordinator)

Participation fee: Free

Number of applicants: 25

Application: Sign up at the KCC office, or send an email to boshu-1@kira-kira.jp with your name and phone number. We will send you a URL to join on the day.

Next meeting: Thursday, January 19, 8:00 p.m. - 9:00 p.m. "Easy Japanese Application": Transmission of Information to Foreign Residents in Japan.



### Dear KIRA Members

KIRA celebrates its 30th anniversary this year. A commemorative ceremony will be held as follows.

Date and Time: Saturday, January 7, 2023, 4:00 p.m. - 5:00 p.m.

Place: Palette Kashiwa Open Space

Please come directly to the venue on the day.

## Open Tokyo Immigration Bureau Matsudo Branch Office

Office hours: 9:00 a.m.-4:00 p.m. (closed on Saturdays, Sundays, and national holidays)

Services: Residence-related documents, Application for Certificate of Eligibility for Residence

Place: 8F Kitemite Matsudo, 1307-1 Matsudo, Matsudo city, 271-0092, 3 min. walk from West Exit of Matsudo Station  
Tel: 047-701-5472



# December Events

| Japanese Shonan Classes                     |                         |   |
|---|-------------------------|---|
| Online Classes                              |                         |   |
| Sat   | 7:00 p.m. – 8:30 p.m.   | Primary II  |
| Sun   | 10:00 a.m.- 11:30 a.m.  | <i>Minna no Nihongo</i> , Primary I (2 classes), Intermediate II      |
| In-person Classes (Shonan Community Center) |                         |   |
| Thu   | 10:00 a.m.-12:00 p.m.   | <i>Minna no Nihongo</i> , Primary I, Japanese from intermediate level |
| Sun   | 10:00 a.m.-12:00 p.m.   | <i>Minna no Nihongo</i> , Primary I                                   |
| Japanese Kashiwa and Kashiwanoha Classes    |                         |   |
| Online Classes                              |                         |   |
| Tue   | 7:00 p.m. - 8:30 p.m.   | <i>Minna no Nihongo</i> , Primary I (Starts at section 8)             |
| Wed   | 10:00 a.m. - 11:30 a.m. | Conversation elementary 2B  |
| Wed   | 7:00 p.m. - 8:30 p.m.   | <i>Minna no Nihongo</i> , Primary II (Starts at section 26)           |
| Thu   | 10:00 a.m. - 11:30 a.m. | Conversation elementary level 1 -Start                                |
| Thu   | 10:00 a.m. - 11:30 a.m. | Conversation elementary level 1                                       |
| Thu   | 1:00 p.m. - 2:30 p.m.   | Conversation elementary level 2 A                                     |
| Fri   | 7:00 p.m. - 8:30 p.m.   | <i>Minna no Nihongo</i> , Primary II (Starts at section 48)           |
| Sat   | 9:30 a.m. - 11:20 a.m.  | Conversation intermediate level                                       |
| In-person Classes (Palette Kashiwa)         |                         |   |
| Wed   | 10:00 a.m. - 11:30 a.m. | <i>Minna no Nihongo</i> , Primary II (Starts at section 26)           |
| Sat   | 10:00 a.m. - 11:30 a.m. | <i>Minna no Nihongo</i> , Primary I (Starts at section 1)             |
| Sat   | 10:00 a.m. - 11:30 a.m. | <i>Minna no Nihongo</i> , Primary I (Starts at section 10)            |

## Consultation for Foreign Residents

Monday: Spanish  
 Tuesday: Korean (only the 2nd and 4th Tuesday)  
 Wednesday: Chinese  
 Thursday: English  
 Friday: Chinese  
 ※ 1:00 p.m. - 5:00 p.m. everyday  
 Consultation Counter for Foreign Residents (Main City Hall 3F)  
 TEL: 04 - 7168 - 1033 No reservation required.

## Kashiwa Information Delivery Service

Sign up to receive email announcements from the city, such as information about earthquakes, fires, crime, and infectious disease outbreaks in the language of your choice. Scan this QR code and register.



Also, please read Kashiwa City Magazine. It contains information about COVID-19 vaccination.



## Information about COVID-19 for Foreign Residents



Available in multiple languages



**Questions?**  
 Please contact the office of  
 Kashiwa Cross-cultural Center (KCC)

Tel: 04-7157-0281 Fax: 04-7165-7321  
 Hours: 8:30 a.m. - 5:15 p.m.  
 Closed on Sundays and national holidays